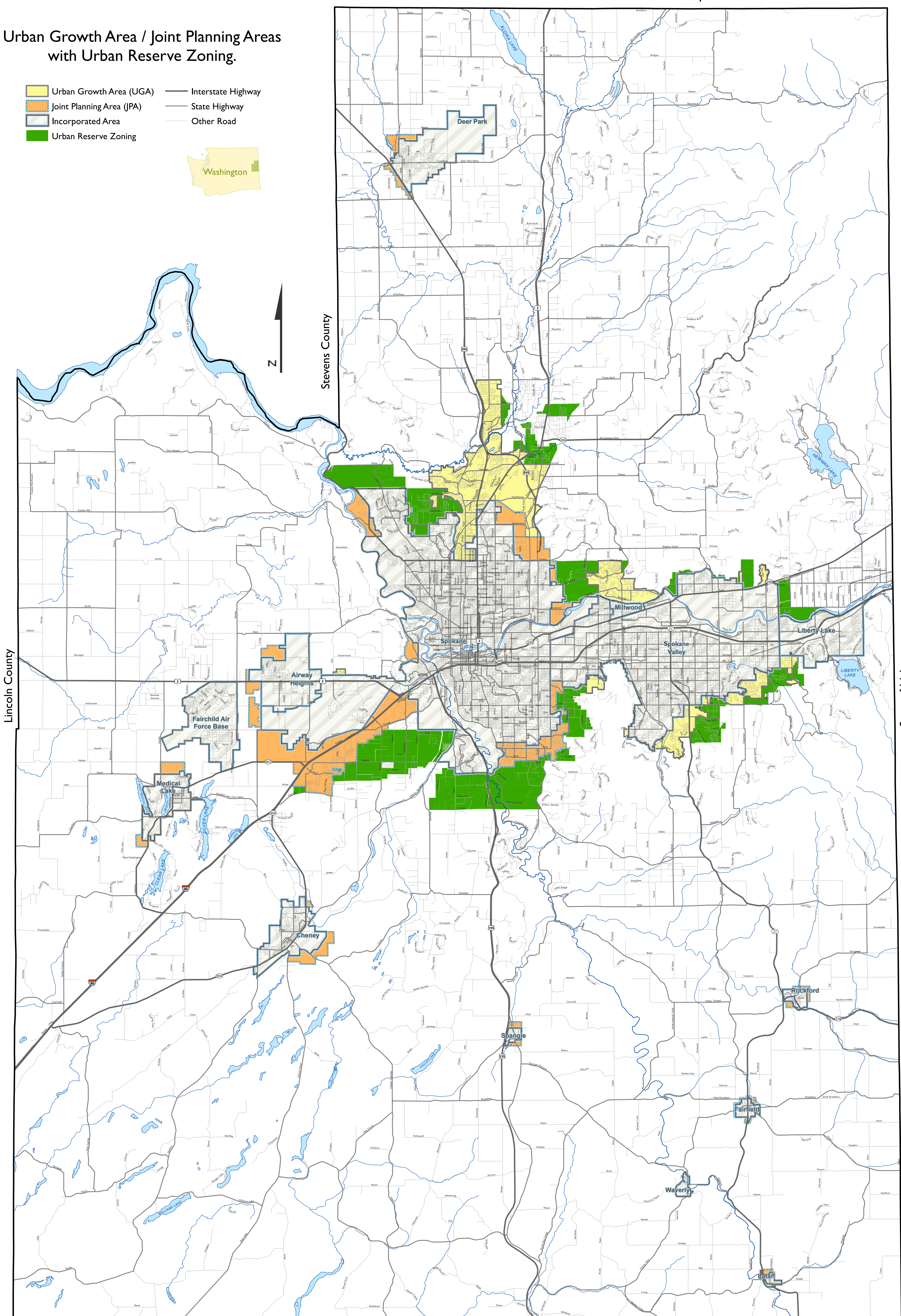


Urban Growth Area / Joint Planning Areas with Urban Reserve Zoning.

- Urban Growth Area (UGA)
- Joint Planning Area (JPA)
- Incorporated Area
- Urban Reserve Zoning
- Interstate Highway
- State Highway
- Other Road



Lincoln County

Stevens County

State of Idaho

Whitman County